



**KIJIMA**  
construction

# KIJIMA CONSTRUCTION COMPANY PROFILE

KIJIMA's goals are High standards, Quality workmanship and a commitment to stand firmly behind all projects. This goal generates Customer satisfaction and future business.

**11 Reading Street | Evander | 2280 | Mpumalanga | South Africa**

2  
0  
2  
4





# OVERVIEW

KIJIMA CONSTRUCTION'S goals are high standards, quality workmanship and a commitment to stand firmly behind all projects. This goal generates Customer satisfaction and future business.

KIJIMA Construction was founded in 2001, headquartered in Evander Mpumalanga. KIJIMA Construction is a 51% Black owned company. BEE compliant at level 1.

We believe that no matter the size and scope of a project, your knowledge and proven experience is as important as the skills and materials, you bring to site.

KIJIMA Construction uses top of the range specialized equipment in order to continuously deliver the high-quality standard of work. The investment of high capital in the development of our workforce.

Constantly conscious and focused on safety.



# MISSION STATEMENT

- To offer our customers the highest level of quality service at fair and market competitive prices.
- To ensure the longevity of our company through repeat and referral business by customer satisfaction in all areas including timeliness, honesty and fairness in our relationships with our Suppliers, customers and professional associates.
- To develop our employee's skill and expertise so that they can enjoy fulfillment and rewards.
- To protect the environment and natural resources.
- To provide client's with most up-to-date information available
- Work to the highest quality
- Deliver on our promises
- Act with integrity and honesty
- Work with the client as “One Team” putting safety first and taking pride in what we are doing, whilst taking care of each other and preserving the environment for future generations.







# OUR VISION

To be successfully; proud and sustainable. To operate and execute projects for the future as we did over the last 20 years.

Providing a safe working environment for our employees. We strive for reliability and quality performance on all services that we provide.

To be an active participant in contributing to the economic reform and global competitiveness of South Africa in the primary and secondary business sector.

To provide an exceptional service offering that allows us to build longstanding relationships.

We aim to offer the best value for money vs our competitors, at the same time operating under the strictest level of safety awareness and standards.

Our mission is to bring pride, passion, innovation, energy, and enthusiasm to the way we do business, and we believe empowering people to explore new challenges to be the best at what they do.





# OUR VALUE SYSTEM



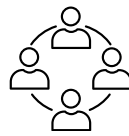
We believe that satisfied customers determine our success and future business.



We are respectful of one another.



We ensure trained employees to assist in achieving our targets effectively.



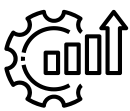
We believe that teamwork builds quality and establishes healthy relationships between personnel, management and our customers.



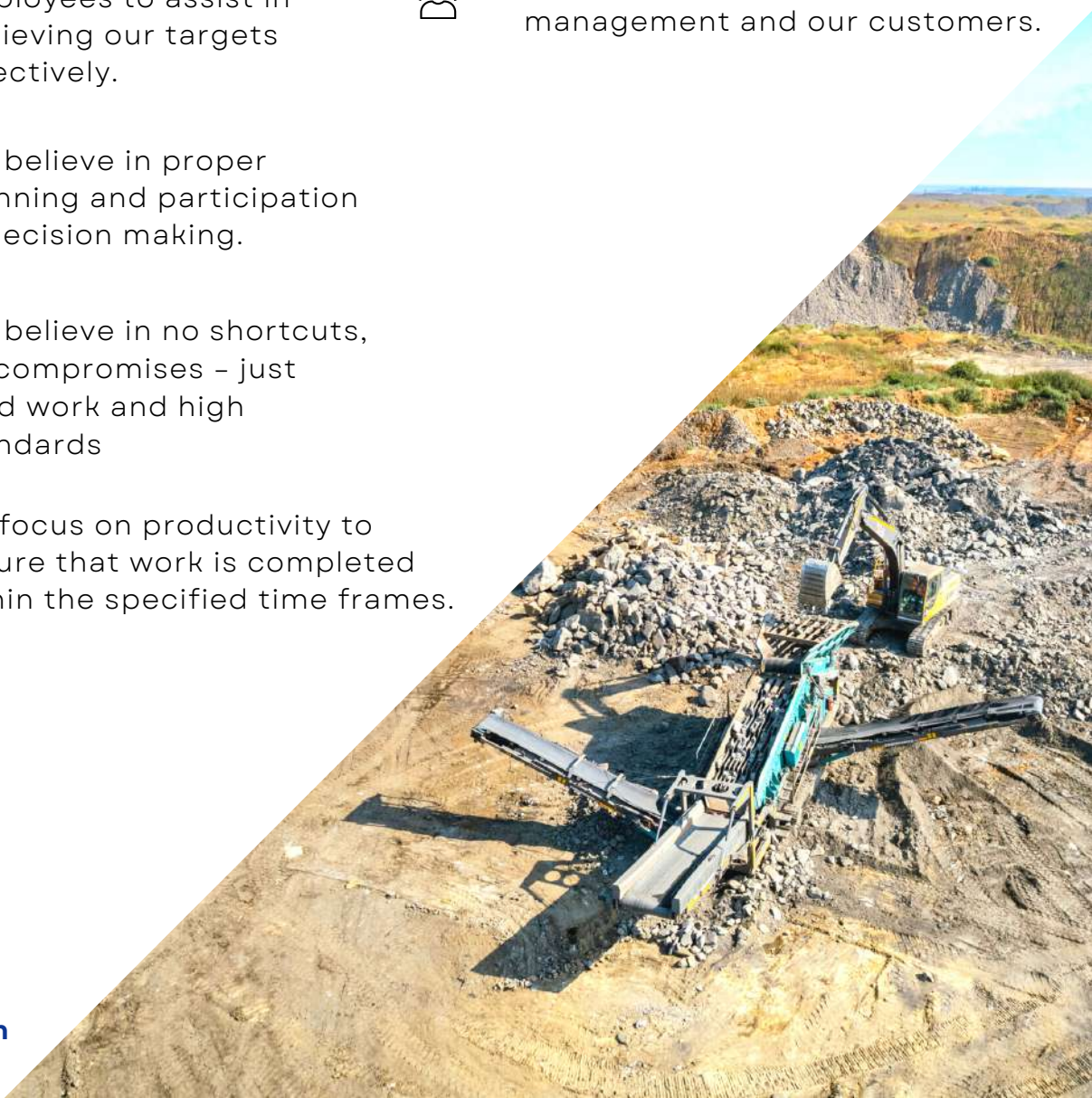
We believe in proper planning and participation in decision making.



We believe in no shortcuts, no compromises – just hard work and high standards



We focus on productivity to ensure that work is completed within the specified time frames.





# QUALITY & WORKMANSHIP

We take pride in the quality of our workmanship and believe the integral part of quality management is to always provide the best job possible. Our Staff are dedicated to achieving our goals and we are committed to achieving the highest of standards.

# COST EFFICIENCY

We strive to deliver our support in terms of project planning and offer alternatives to support savings wherever possible so that you the Client will always feel that you have received value for your money.







# HEALTH & SAFETY

Kijima Construction (Pty) Ltd boasts an impeccable Occupational Health and Safety Management System which meets and exceeds the international Standard of ISO 45001: 2018 (Occupational Health and Safety) and ISO 9001:2015 (Quality Management Systems). These management systems are assessed and accredited to the standards by the Third-party authority, Lloyds.

We are a Green graded company on the Sasol Service Provider Safety Management System (SPSM).

Soon Kijima Construction Environmental Responsibility Management system will be assessed and accredited by Lloyds to ISO 14001: 2015.

Kijima Construction maintains these standards to demonstrate to our valued Clients our commitment towards compliance and customer satisfaction.

At Kijima Construction we believe that safety is a way of life. We say no to unsafe acts and conditions and uphold the principle of Zero tolerance in all our projects and operations.

We are committed to the principle of Zero Harm to our employees, environment, assets, equipment, and our stakeholders.

We treat every member of our Team and Clients with respect, consistently and fairly.

Our Safety Team comprise of members who have extensive knowledge, experience and are fully licensed with statutory bodies such as the SACPCMP.





# WHAT WE DO

KIJIMA Construction



***Structural Steel***

From fabrication to transport and installation. We are equipped to handle all your steel work needs.



***Civil Maintenance***

At Kijima Construction, we excel in the critical area of civil maintenance work, ensuring the longevity and functionality of your infrastructure.





# WHAT WE DO

KIJIMA Construction



## *Civil Concrete Construction*

At Kijima Construction, we excel in the critical area of civil maintenance work, ensuring the longevity and functionality of your infrastructure.



**KIJIMA**  
construction

## *Roads & Earth Works*

Our estimating, planning, procurement, logistic and execution divisions work hand in hand to ensure that projects get delivered in time and in budget.





# WHAT WE DO

KIJIMA Construction



## ***Mechanical Construction***

We specialize in the installation of steel and HDPE pipelines, pumps, and associated electrical and instrumental works.



## ***Building Construction*** *- Residential & Commercial Developments -*

Taking ideas on paper and turning them into real property.





# WHAT WE DO

KIJIMA Construction



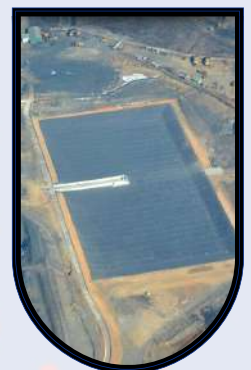
**Bulk Earthmoving**  
- Material Handling & Mining -

Bulk earthworks form an integral part of any mining development.



**PCD's**  
- Earth Dams and Lining Systems -

We construct dams of various shapes and sizes depending on client needs.







# GALLERY







**KJIMA**  
construction





**KUJIMA**  
construction







# OUR CLIENTS

Customer Service is not just a department at Kijima, it is our entire Company!





# CONNECT WITH US



(017) 632 4292



admin@kijimaconstruction.co.za



www.kijimaconstruction.com



11 Reading Street | Evander  
Mpumalanga | South Africa